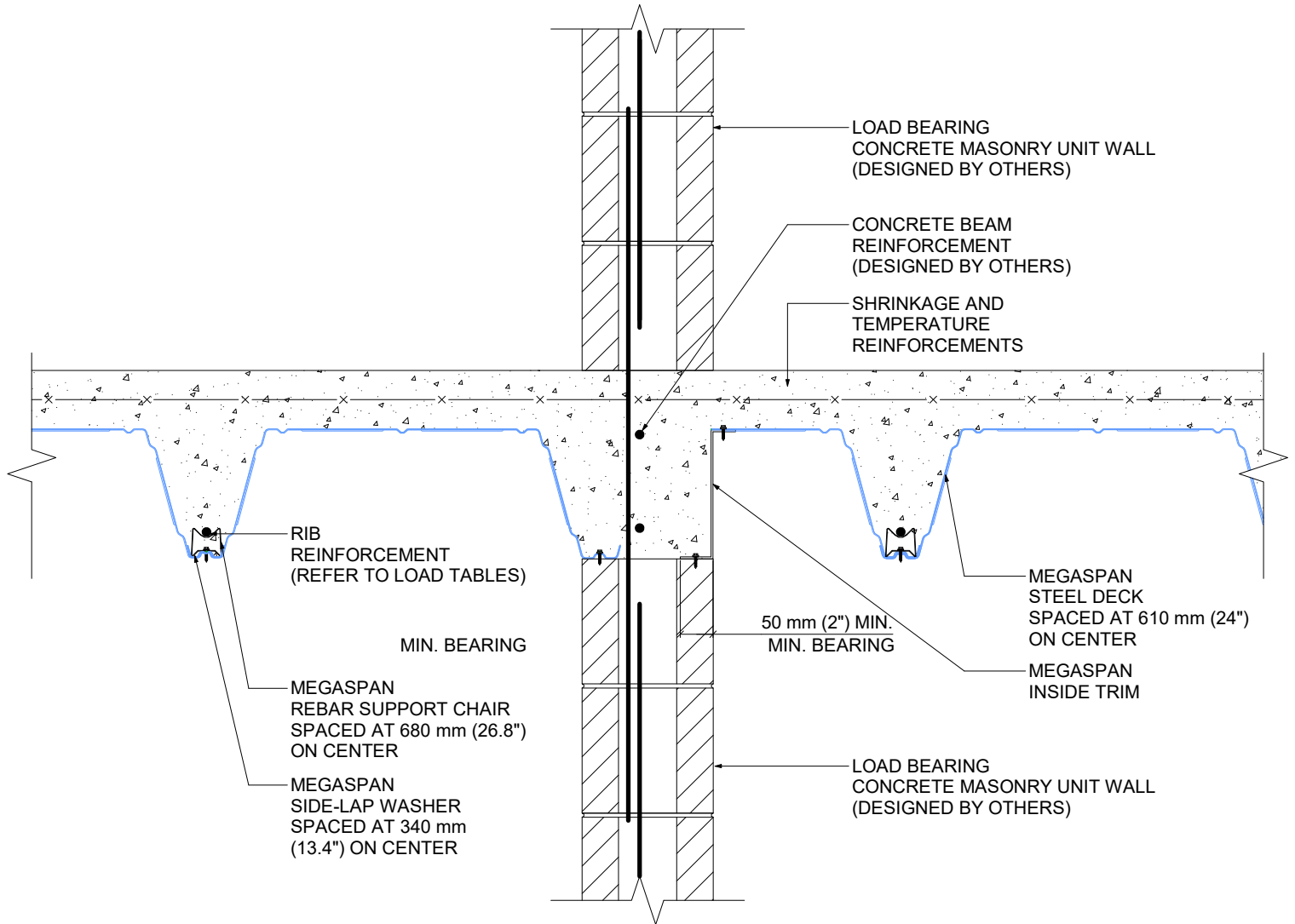


MegaSPAN

Composite Floor System

CMU-001



SIDE-BEARING ON LOAD-BEARING CONCRETE MASONRY UNIT WALL (BOTH SIDES)

REVISION NO.	1
DRAWN BY	HL
DATE	JAN 01, 2021
SCALE	1 : 10



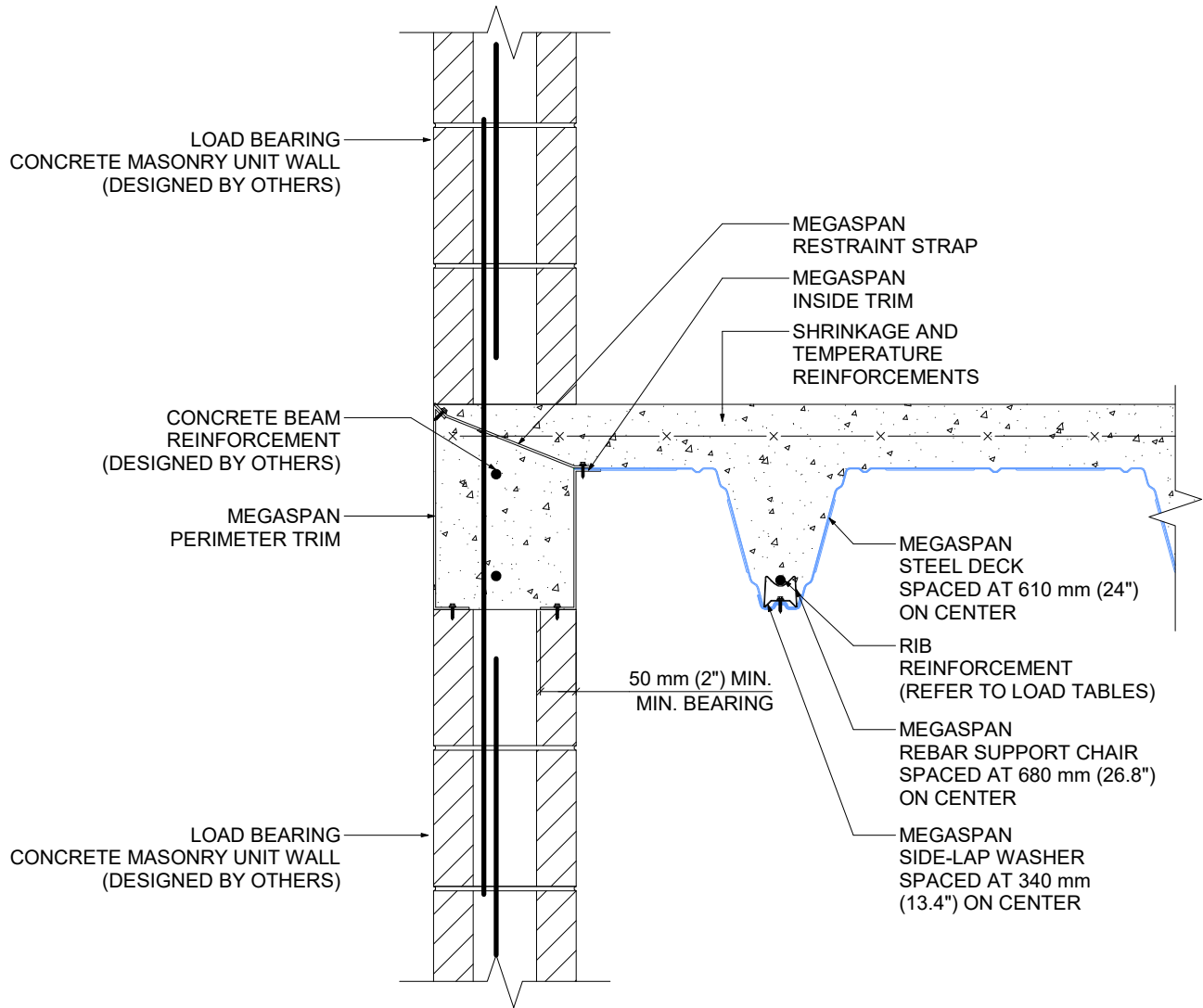
8 ABACUS RD,
BRAMPTON, ONTARIO
TEL: (289) 588-0936 FAX: (905) 482 1920
contact@cpt-group.ca sales@cpt-group.ca

This drawing is intended as an aid to the design professional and should not be used to replace the judgement of a qualified engineer or architect. Canadian Panel Tech Limited makes no warranties, express or implied, for variations from such drawings in actual construction and does not obviate the need to determine the suitability for a given situation. Canadian Panel Tech Limited assumes no responsibility for any errors that may appear in this drawing. Please visit www.cpt-group.ca for more information.

MegaSPAN

Composite Floor System

CMU-002



SIDE-BEARING ON LOAD-BEARING CONCRETE MASONRY UNIT WALL

REVISION NO.

1

DRAWN BY

HL

DATE

JAN 01, 2021

SCALE

1 : 10



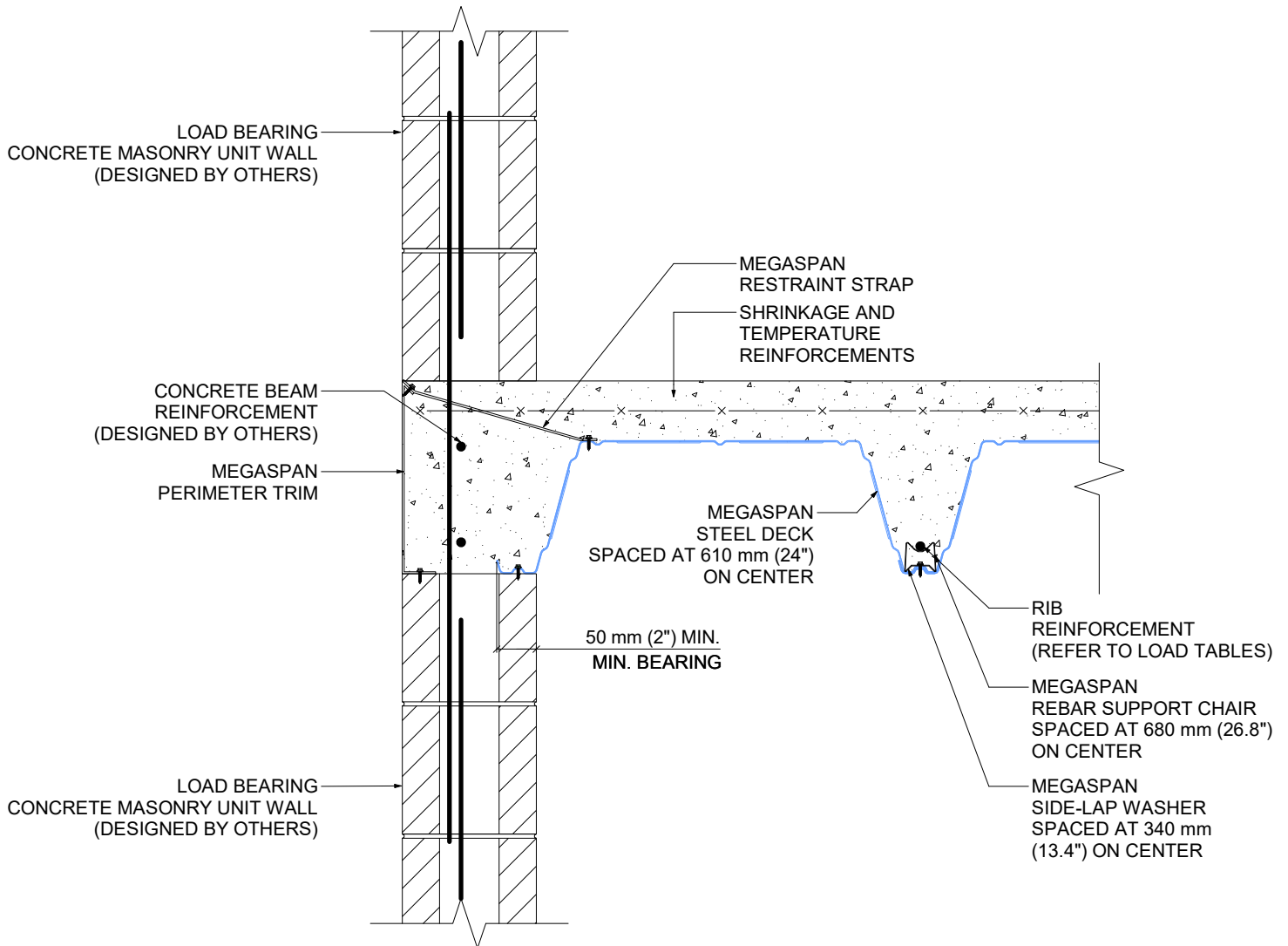
8 ABACUS RD,
BRAMPTON, ONTARIO
TEL: (289) 588-0936 FAX: (905) 482 1920
contact@cpt-group.ca sales@cpt-group.ca

This drawing is intended as an aid to the design professional and should not be used to replace the judgement of a qualified engineer or architect. Canadian Panel Tech Limited makes no warranties, express or implied, for variations from such drawings in actual construction and does not obviate the need to determine the suitability for a given situation. Canadian Panel Tech Limited assumes no responsibility for any errors that may appear in this drawing. Please visit www.cpt-group.ca for more information.

MegaSPAN

Composite Floor System

CMU-003



SIDE-BEARING ON LOAD-BEARING CONCRETE MASONRY UNIT WALL W/ INSIDE TRIM

REVISION NO.

1

DRAWN BY

HL

DATE

JAN 01, 2021

SCALE

1 : 10



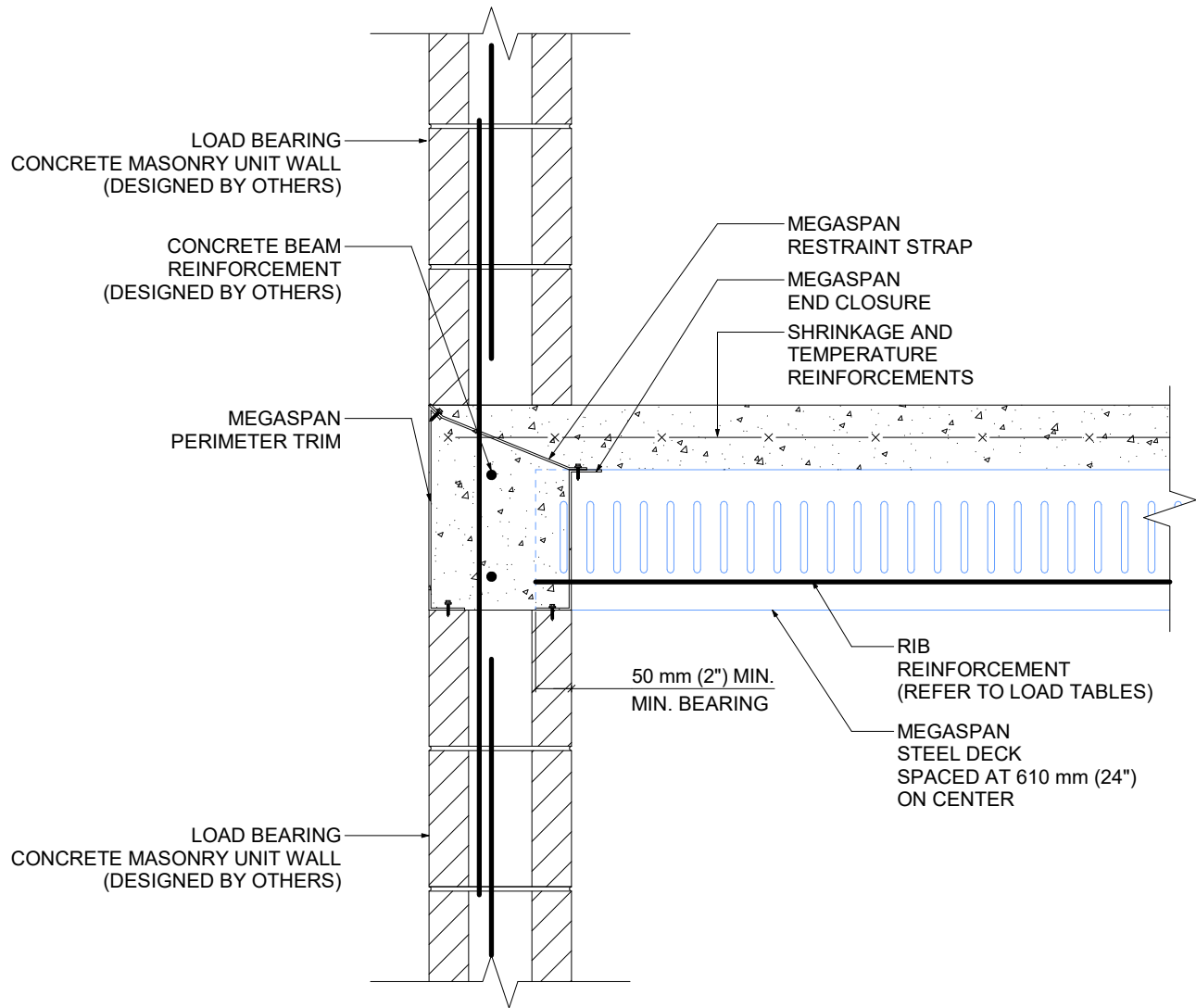
8 ABACUS RD,
BRAMPTON, ONTARIO
TEL: (289) 588-0936 FAX: (905) 482 1920
contact@cpt-group.ca sales@cpt-group.ca

This drawing is intended as an aid to the design professional and should not be used to replace the judgement of a qualified engineer or architect. Canadian Panel Tech Limited makes no warranties, express or implied, for variations from such drawings in actual construction and does not obviate the need to determine the suitability for a given situation. Canadian Panel Tech Limited assumes no responsibility for any errors that may appear in this drawing. Please visit www.cpt-group.ca for more information.

MegaSPAN

Composite Floor System

CMU-004



END-BEARING ON LOAD-BEARING CONCRETE MASONRY UNIT WALL

REVISION NO.

1

DRAWN BY

HL

DATE

JAN 01, 2021

SCALE

1 : 10



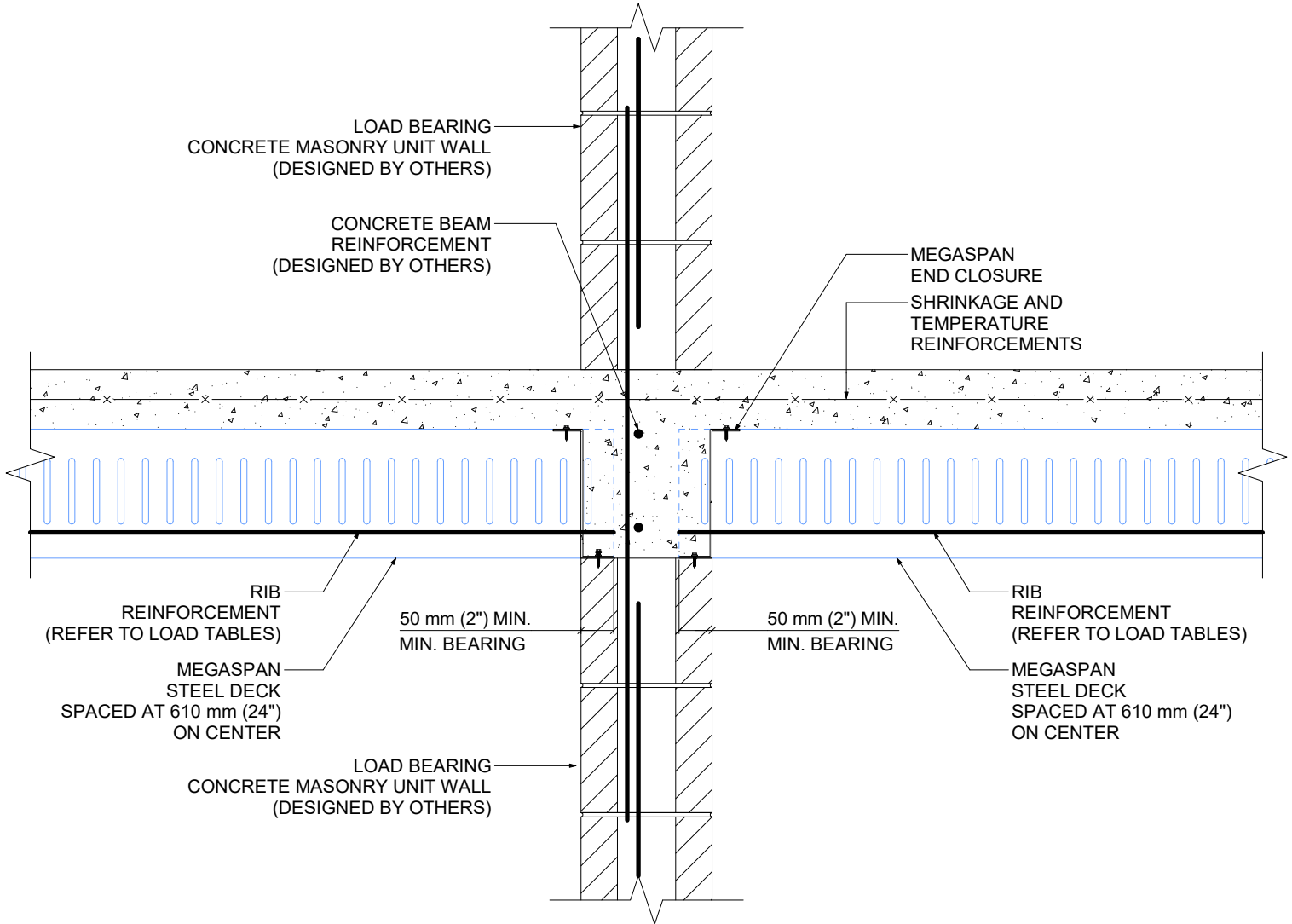
8 ABACUS RD,
BRAMPTON, ONTARIO
TEL: (289) 588-0936 FAX: (905) 482 1920
contact@cpt-group.ca sales@cpt-group.ca

This drawing is intended as an aid to the design professional and should not be used to replace the judgement of a qualified engineer or architect. Canadian Panel Tech Limited makes no warranties, express or implied, for variations from such drawings in actual construction and does not obviate the need to determine the suitability for a given situation. Canadian Panel Tech Limited assumes no responsibility for any errors that may appear in this drawing. Please visit www.cpt-group.ca for more information.

MegaSPAN

Composite Floor System

CMU-005



END-BEARING ON LOAD-BEARING CONCRETE MASONRY UNIT WALL (BOTH SIDES)

REVISION NO.	1
DRAWN BY	HL
DATE	JAN 01, 2021
SCALE	1 : 10



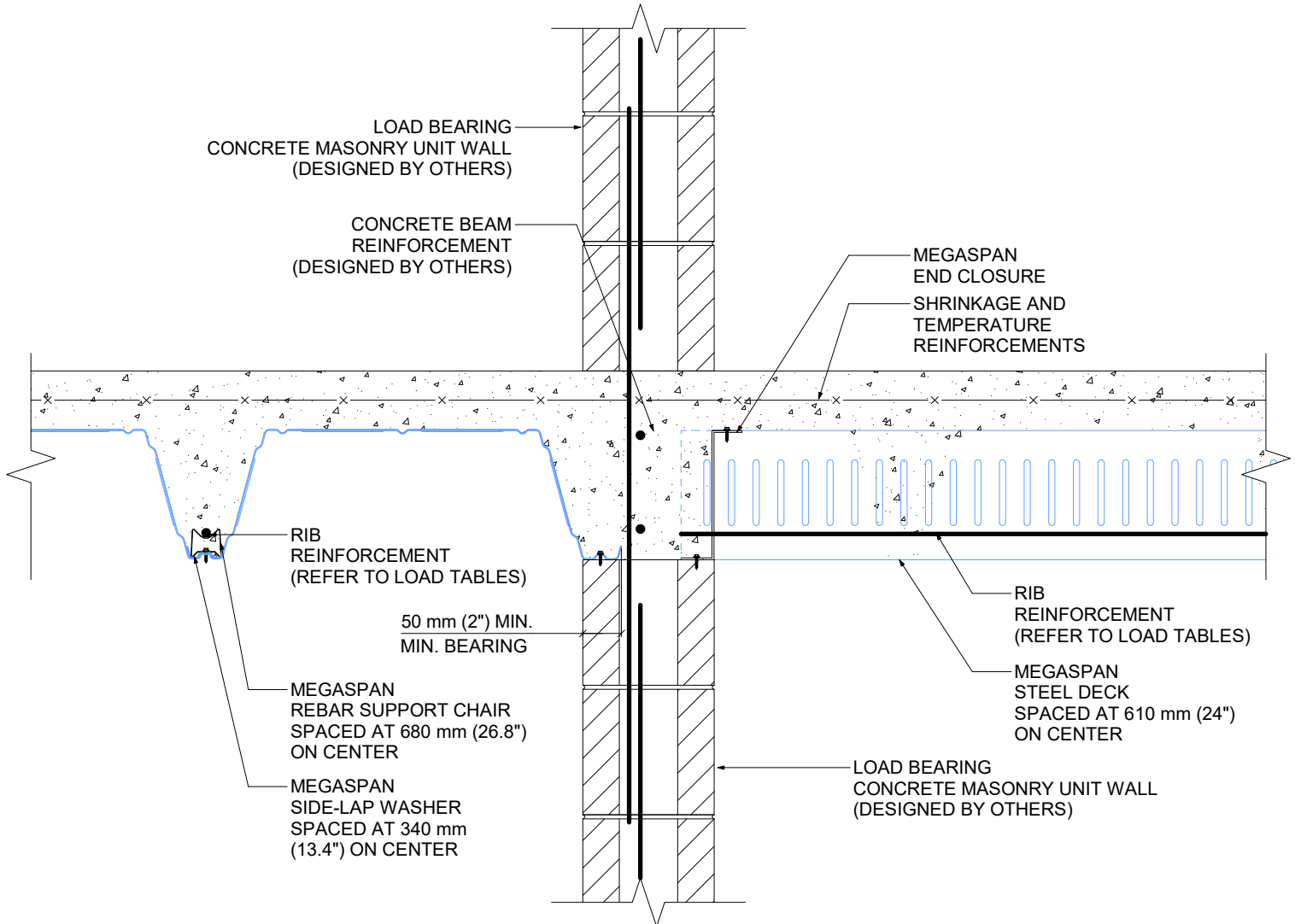
8 ABACUS RD,
BRAMPTON, ONTARIO
TEL: (289) 588-0936 FAX: (905) 482 1920
contact@cpt-group.ca sales@cpt-group.ca

This drawing is intended as an aid to the design professional and should not be used to replace the judgement of a qualified engineer or architect. Canadian Panel Tech Limited makes no warranties, express or implied, for variations from such drawings in actual construction and does not obviate the need to determine the suitability for a given situation. Canadian Panel Tech Limited assumes no responsibility for any errors that may appear in this drawing. Please visit www.cpt-group.ca for more information.

MegaSPAN

Composite Floor System

CMU-006



SIDE-BEARING AND END-BEARING ON LOAD-BEARING CONCRETE MASONRY UNIT WALL

REVISION NO.

1

DRAWN BY

HL

DATE

JAN 01, 2021

SCALE

1 : 10



8 ABACUS RD,
BRAMPTON, ONTARIO
TEL: (289) 588-0936 FAX: (905) 482 1920
contact@cpt-group.ca sales@cpt-group.ca

This drawing is intended as an aid to the design professional and should not be used to replace the judgement of a qualified engineer or architect. Canadian Panel Tech Limited makes no warranties, express or implied, for variations from such drawings in actual construction and does not obviate the need to determine the suitability for a given situation. Canadian Panel Tech Limited assumes no responsibility for any errors that may appear in this drawing. Please visit www.cpt-group.ca for more information.