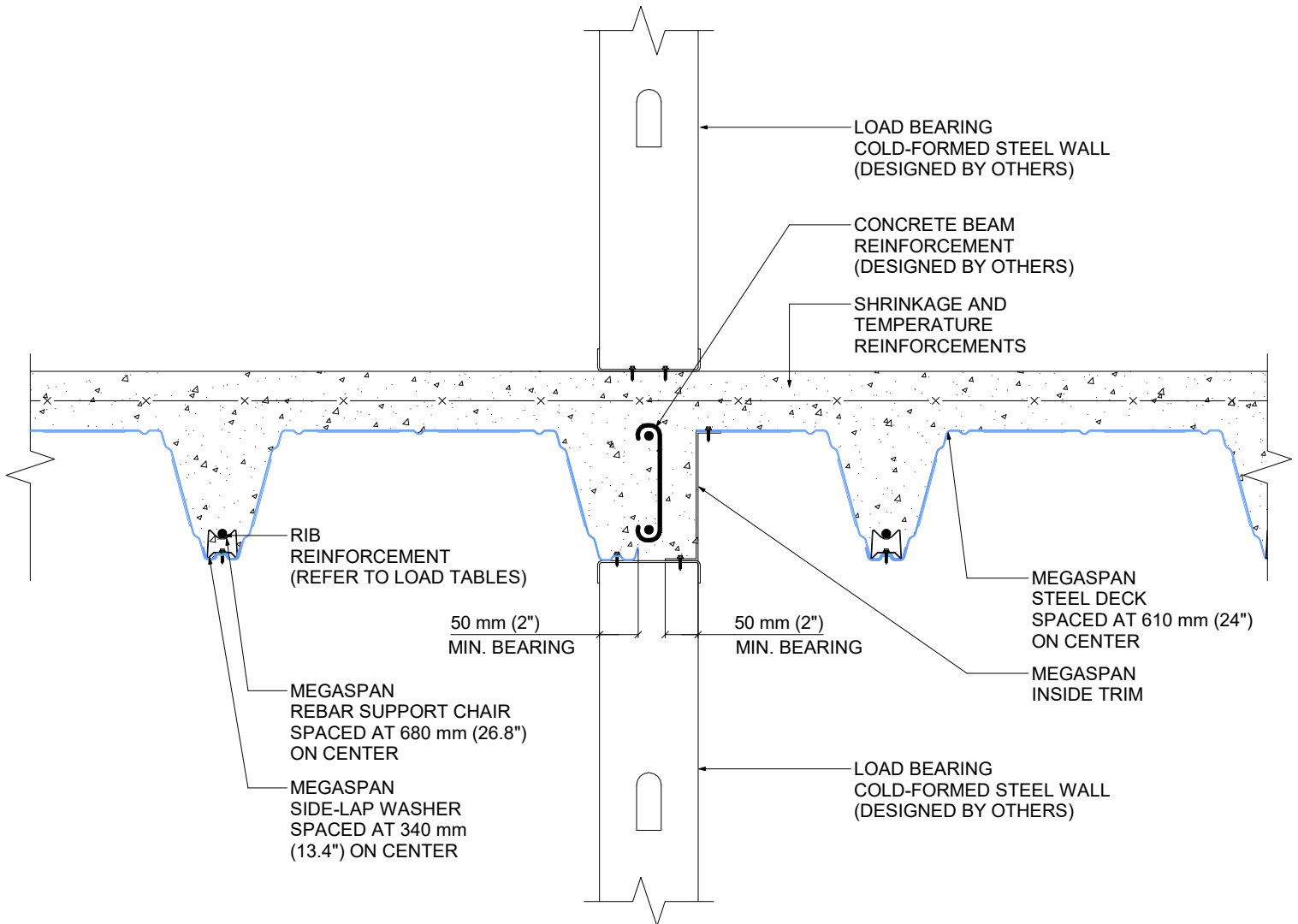


# MegaSPAN

Composite Floor System

# CFS-001



## SIDE-BEARING ON LOAD-BEARING COLD-FORMED-STEEL WALL (BOTH SIDES)

REVISION NO.	1
DRAWN BY	HL
DATE	JAN 01, 2021
SCALE	1 : 10



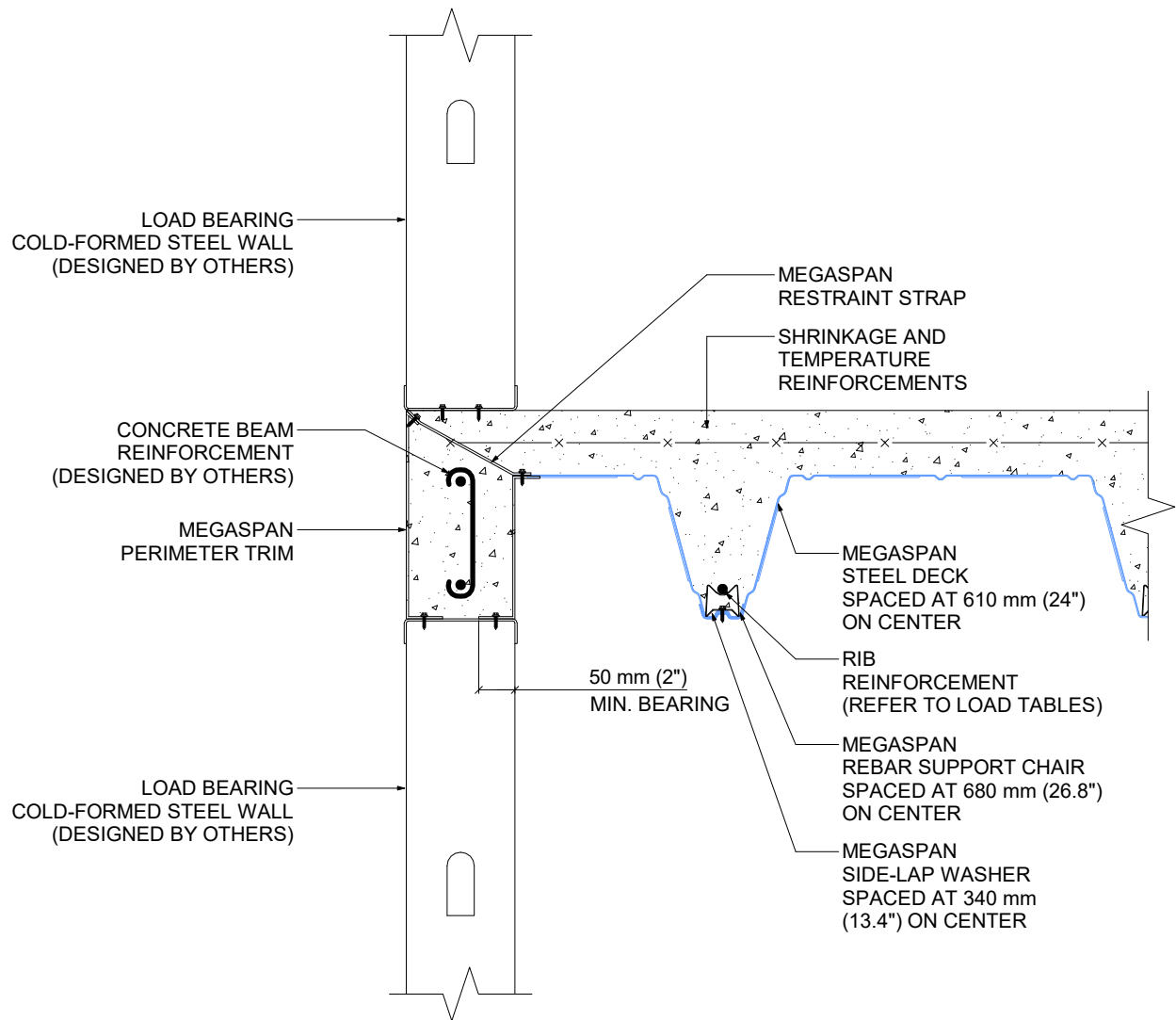
8 ABACUS RD,  
BRAMPTON, ONTARIO  
TEL: (289) 588-0936 FAX: (905) 482 1920  
contact@cpt-group.ca sales@cpt-group.ca

This drawing is intended as an aid to the design professional and should not be used to replace the judgement of a qualified engineer or architect. Canadian Panel Tech Limited makes no warranties, express or implied, for variations from such drawings in actual construction and does not obviate the need to determine the suitability for a given situation. Canadian Panel Tech Limited assumes no responsibility for any errors that may appear in this drawing. Please visit [www.cpt-group.ca](http://www.cpt-group.ca) for more information.

# MegaSPAN

Composite Floor System

# CFS-002



## SIDE-BEARING ON COLD-FORMED-STEEL WALL W/ INSIDE TRIM

REVISION NO.

1

DRAWN BY

HL

DATE

JAN 01, 2021

SCALE

1 : 10



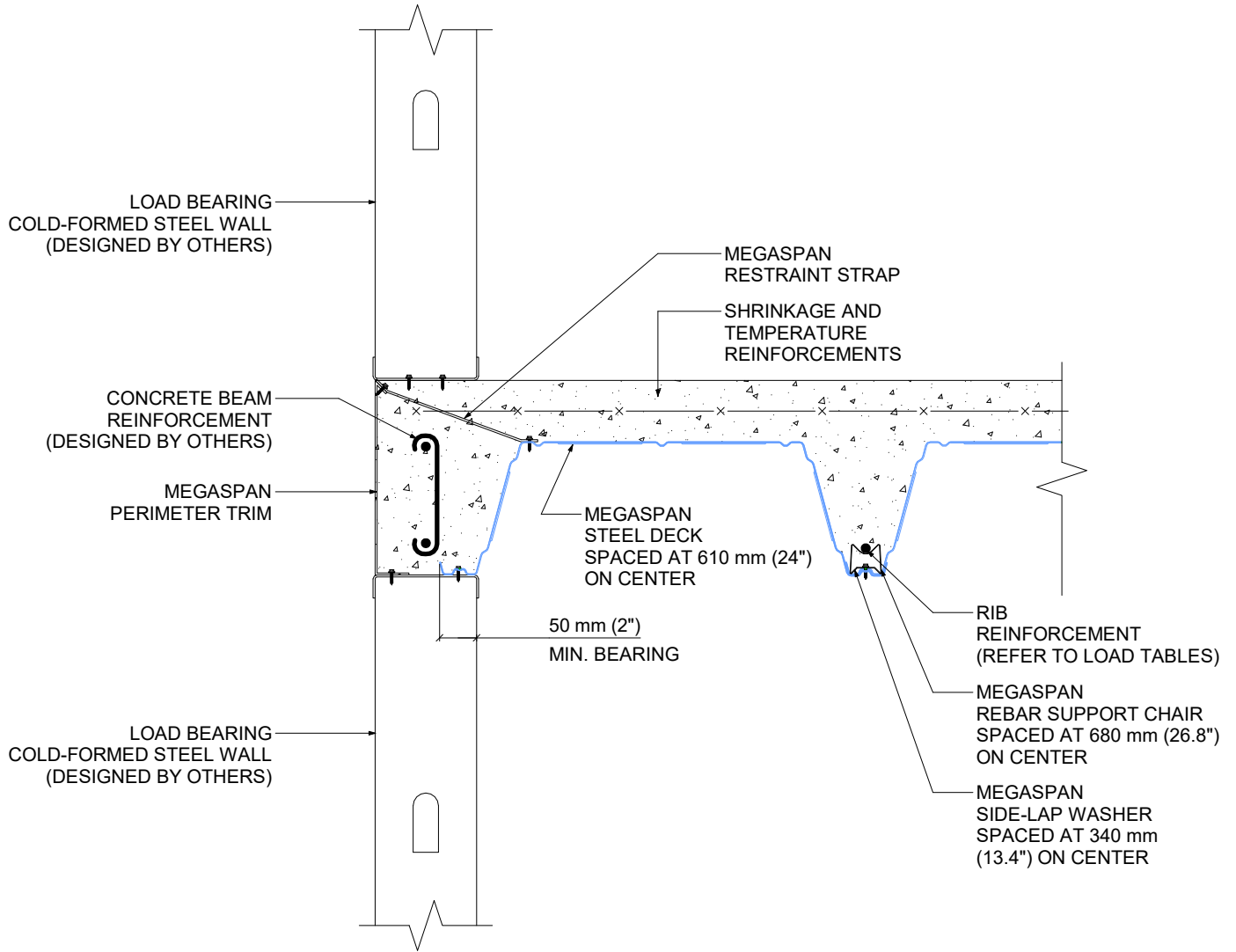
8 ABACUS RD,  
BRAMPTON, ONTARIO  
TEL: (289) 588-0936 FAX: (905) 482 1920  
contact@cpt-group.ca sales@cpt-group.ca

This drawing is intended as an aid to the design professional and should not be used to replace the judgement of a qualified engineer or architect. Canadian Panel Tech Limited makes no warranties, express or implied, for variations from such drawings in actual construction and does not obviate the need to determine the suitability for a given situation. Canadian Panel Tech Limited assumes no responsibility for any errors that may appear in this drawing. Please visit [www.cpt-group.ca](http://www.cpt-group.ca) for more information.

# MegaSPAN

Composite Floor System

# CFS-003



## SIDE-BEARING ON LOAD-BEARING CFS WALL

REVISION NO.

1

DRAWN BY

HL

DATE

JAN 01, 2021

SCALE

1 : 10



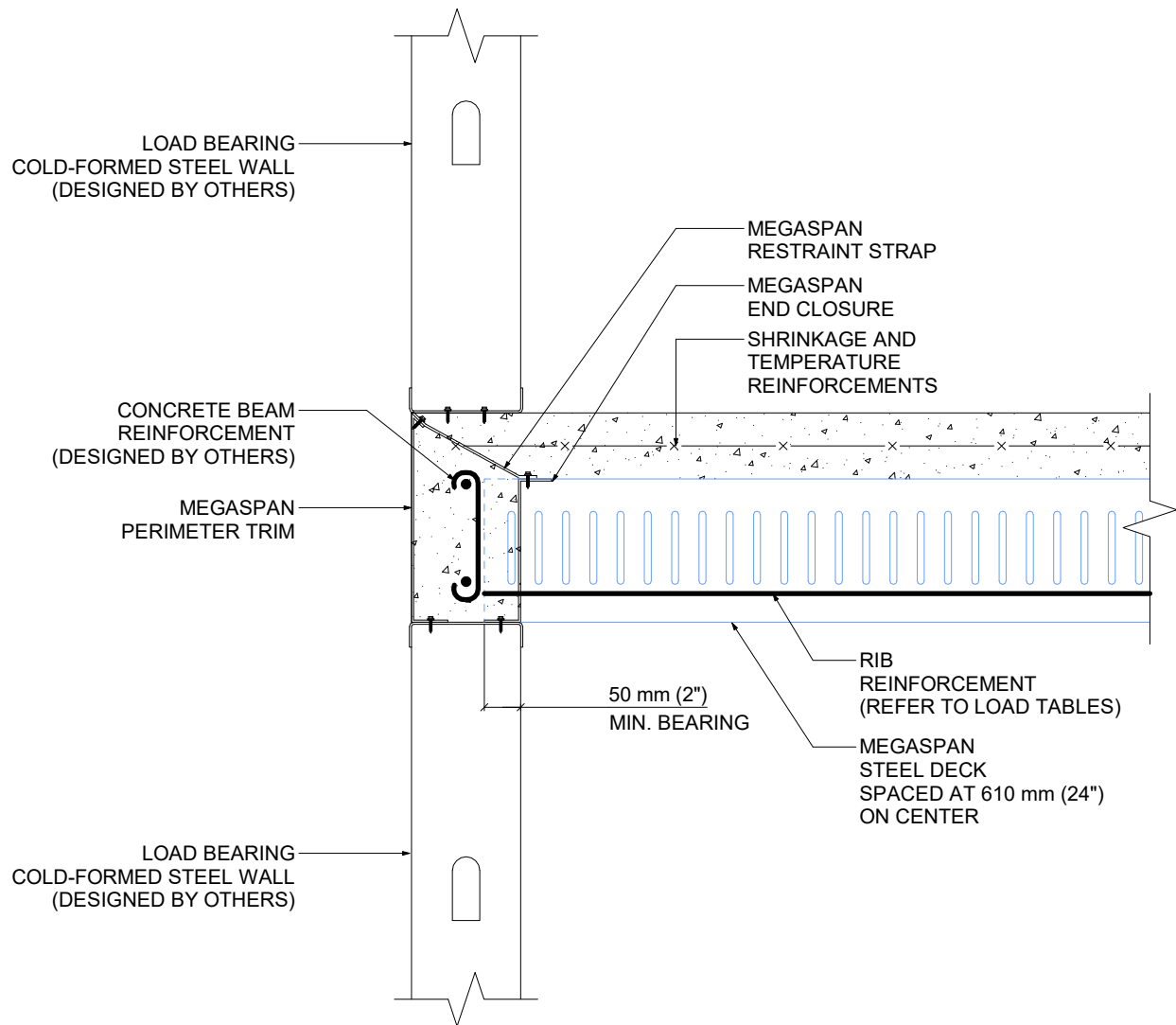
8 ABACUS RD,  
BRAMPTON, ONTARIO  
TEL: (289) 588-0936 FAX: (905) 482 1920  
contact@cpt-group.ca sales@cpt-group.ca

This drawing is intended as an aid to the design professional and should not be used to replace the judgement of a qualified engineer or architect. Canadian Panel Tech Limited makes no warranties, express or implied, for variations from such drawings in actual construction and does not obviate the need to determine the suitability for a given situation. Canadian Panel Tech Limited assumes no responsibility for any errors that may appear in this drawing. Please visit [www.cpt-group.ca](http://www.cpt-group.ca) for more information.

# MegaSPAN

Composite Floor System

# CFS-004



## END-BEARING ON LOAD-BEARING COLD-FORMED-STEEL WALL

REVISION NO.

1

DRAWN BY

HL

DATE

JAN 01, 2021

SCALE

1 : 10



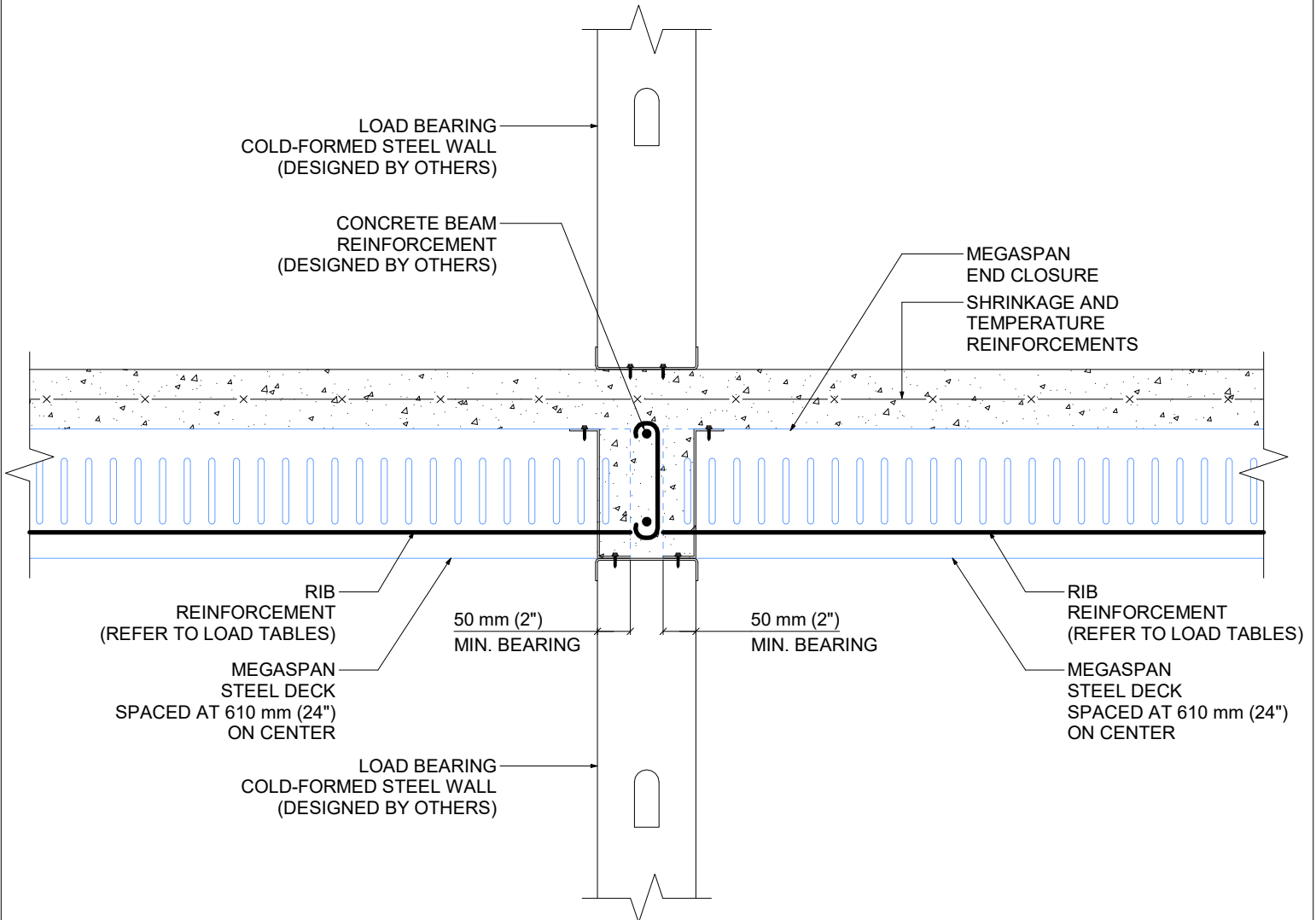
8 ABACUS RD,  
BRAMPTON, ONTARIO  
TEL: (289) 588-0936 FAX: (905) 482 1920  
contact@cpt-group.ca sales@cpt-group.ca

This drawing is intended as an aid to the design professional and should not be used to replace the judgement of a qualified engineer or architect. Canadian Panel Tech Limited makes no warranties, express or implied, for variations from such drawings in actual construction and does not obviate the need to determine the suitability for a given situation. Canadian Panel Tech Limited assumes no responsibility for any errors that may appear in this drawing. Please visit [www.cpt-group.ca](http://www.cpt-group.ca) for more information.

# MegaSPAN

Composite Floor System

# CFS-005



## END-BEARING ON LOAD-BEARING COLD-FORMED-STEEL WALL (BOTH SIDES)

REVISION NO.

1

DRAWN BY

HL

DATE

JAN 01, 2021

SCALE

1 : 10



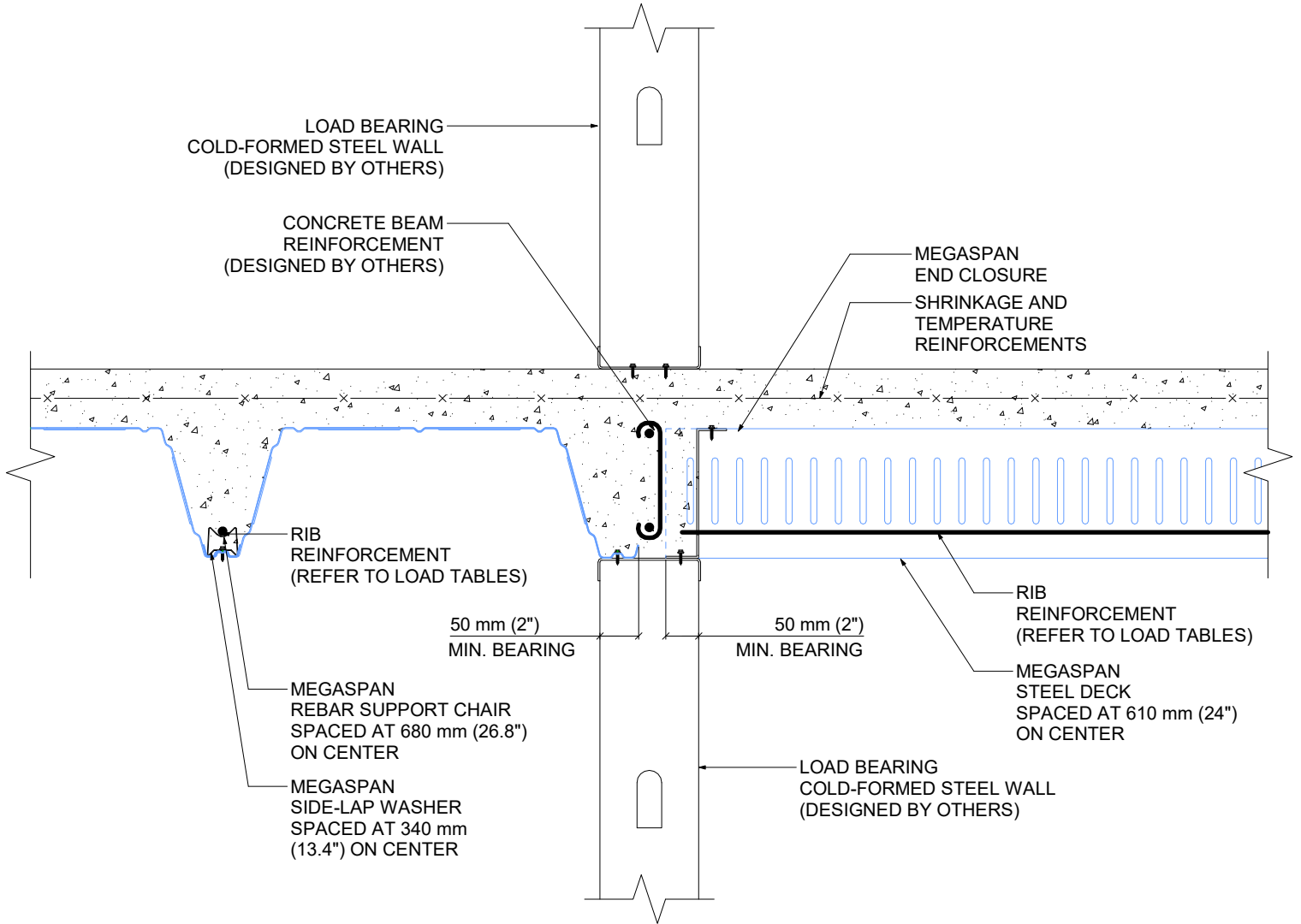
8 ABACUS RD,  
BRAMPTON, ONTARIO  
TEL: (289) 588-0936 FAX: (905) 482 1920  
contact@cpt-group.ca sales@cpt-group.ca

This drawing is intended as an aid to the design professional and should not be used to replace the judgement of a qualified engineer or architect. Canadian Panel Tech Limited makes no warranties, express or implied, for variations from such drawings in actual construction and does not obviate the need to determine the suitability for a given situation. Canadian Panel Tech Limited assumes no responsibility for any errors that may appear in this drawing. Please visit [www.cpt-group.ca](http://www.cpt-group.ca) for more information.

# MegaSPAN

Composite Floor System

# CFS-006



## SIDE-BEARING AND END-BEARING ON LOAD-BEARING COLD-FORMED STEEL WALL

REVISION NO.

1

DRAWN BY

HL

DATE

JAN 01, 2021

SCALE

1 : 10



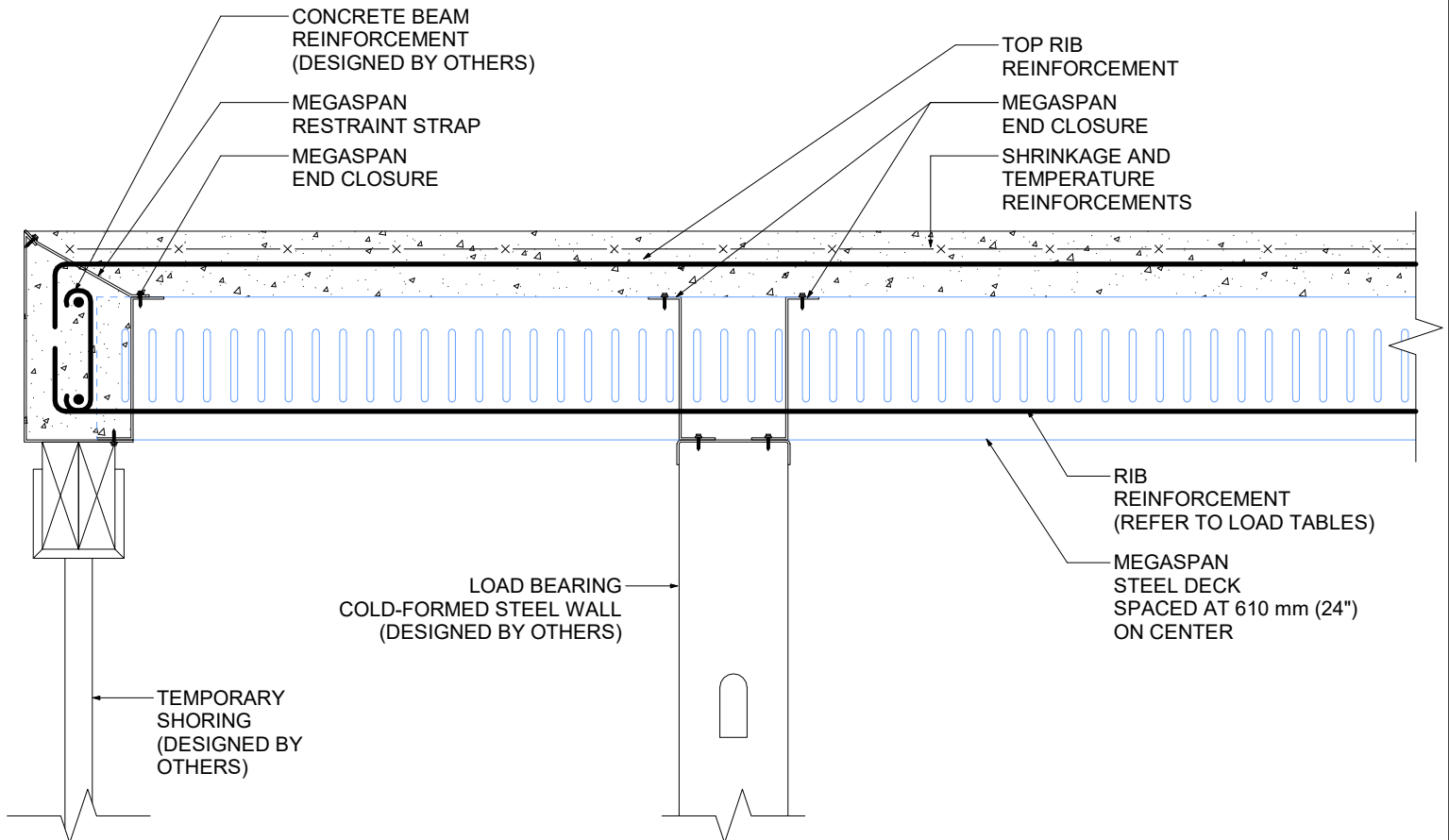
8 ABACUS RD,  
BRAMPTON, ONTARIO  
TEL: (289) 588-0936 FAX: (905) 482 1920  
contact@cpt-group.ca sales@cpt-group.ca

This drawing is intended as an aid to the design professional and should not be used to replace the judgement of a qualified engineer or architect. Canadian Panel Tech Limited makes no warranties, express or implied, for variations from such drawings in actual construction and does not obviate the need to determine the suitability for a given situation. Canadian Panel Tech Limited assumes no responsibility for any errors that may appear in this drawing. Please visit [www.cpt-group.ca](http://www.cpt-group.ca) for more information.

# MegaSPAN

Composite Floor System

# CFS-007



## CANTILEVER ON LOAD-BEARING COLD-FORMED STEEL WALL

REVISION NO. <b>1</b>
DRAWN BY <b>HL</b>
DATE <b>JAN 01, 2021</b>
SCALE <b>1 : 10</b>



8 ABACUS RD,  
BRAMPTON, ONTARIO  
TEL: (289) 588-0936 FAX: (905) 482 1920  
contact@cpt-group.ca sales@cpt-group.ca

This drawing is intended as an aid to the design professional and should not be used to replace the judgement of a qualified engineer or architect. Canadian Panel Tech Limited makes no warranties, express or implied, for variations from such drawings in actual construction and does not obviate the need to determine the suitability for a given situation. Canadian Panel Tech Limited assumes no responsibility for any errors that may appear in this drawing. Please visit [www.cpt-group.ca](http://www.cpt-group.ca) for more information.